



END-TO-END SECURITY SOLUTIONS  
FOR BANKING INSTITUTIONS  
**SMART BANKING SOLUTION**

 smart solution **2.0**

**BANKING**

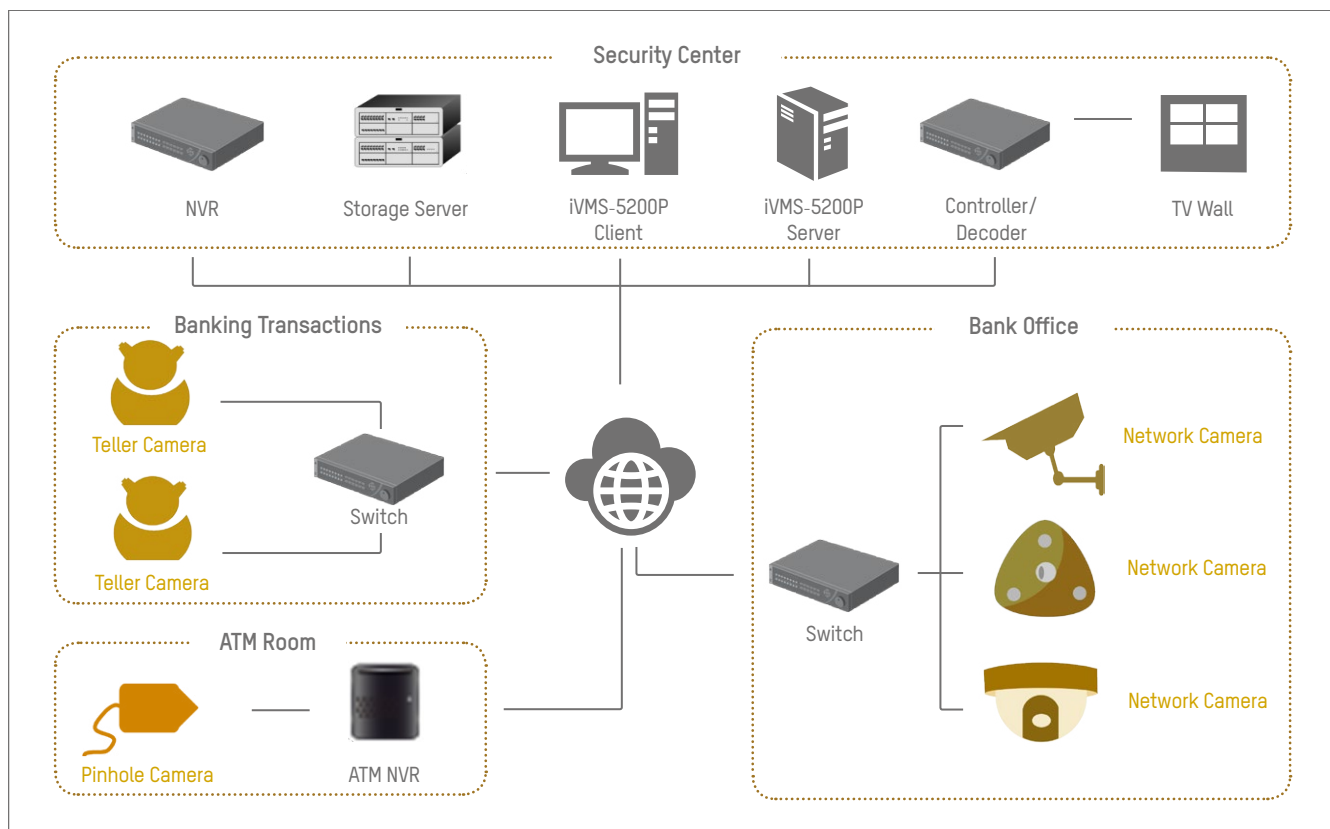
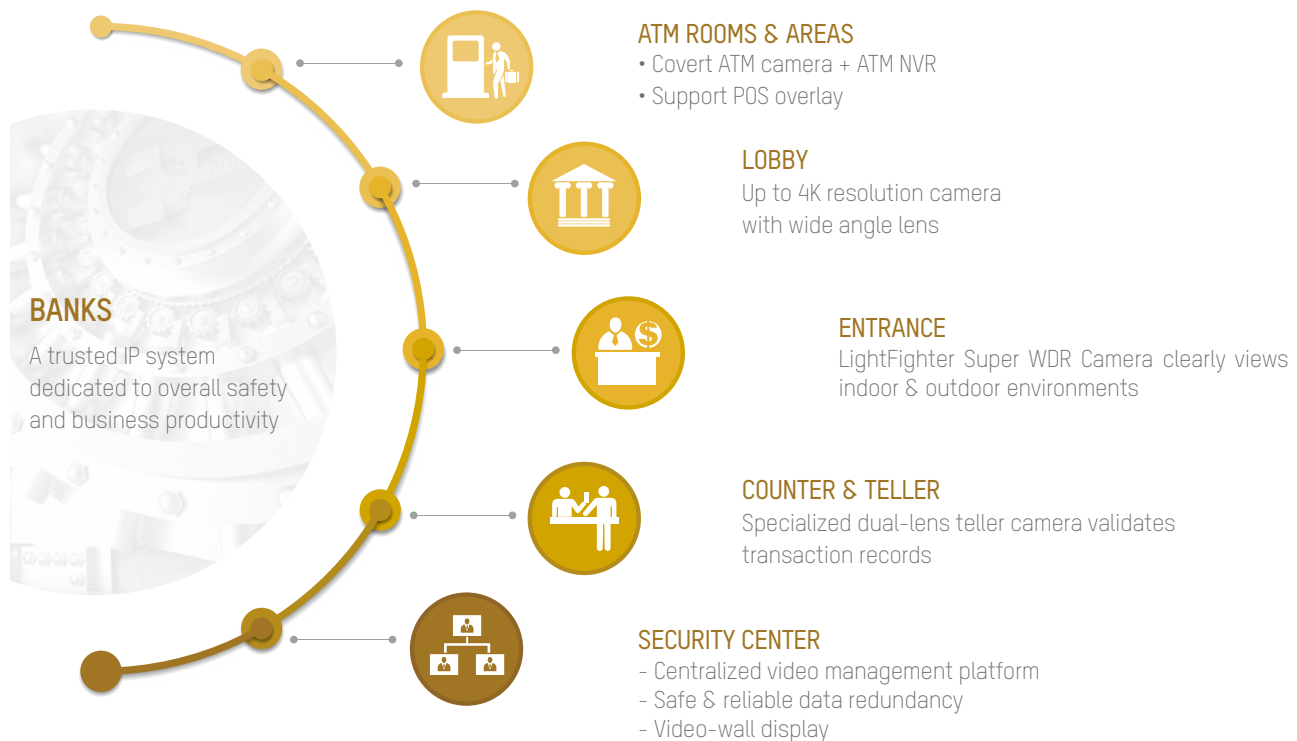


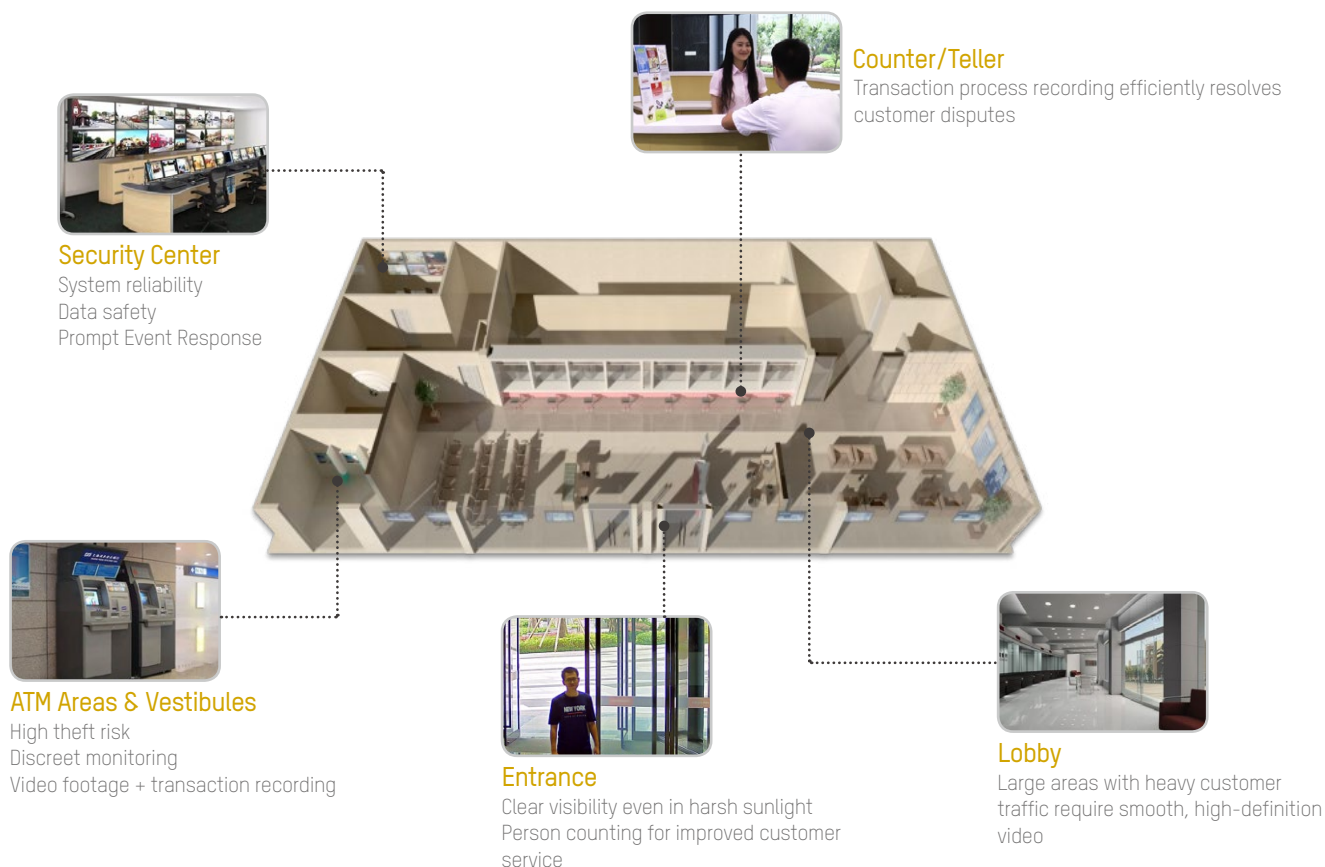
Money, finance and security businesses are vulnerable to constant threats. Hikvision understands the unique needs of these industries and offer reliable solutions that you can bank on! Hikvision's Smart Banking Surveillance Solution boasts powerful, intelligent functionalities. These functionalities are embedded with advanced technology to help you integrate your financial facilities – from branch offices to service centers to treasuries – into a centralized monitoring solution that is easy to implement, manage and integrate. Hikvision helps you conduct effective surveillance of bank assets, manage the security of your clients and personnel, protect restricted areas, and secure ATM areas with unwavering reliability. And there's more – Hikvision surveillance solutions also improve accountability, efficiency and customer satisfaction for better business.

## A SMART SOLUTION FOR BANK SECURITY

- Ensure around-the-clock safety for customers and employees
- Increase transaction safety and customer satisfaction
- Collect reliable footage for post-investigation
- Manage all the branches effectively and easily

# BENEFITS & SOLUTIONS





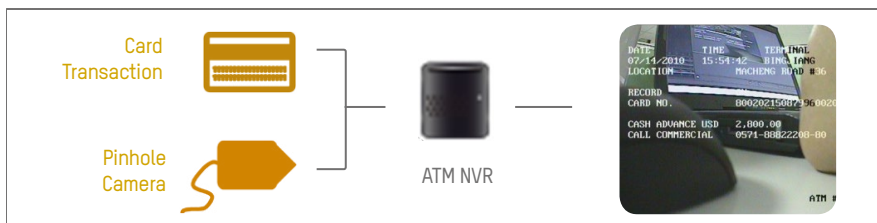
## ATM Area Monitoring



Hikvision provides a complete solution for ATM machine and its cabin area's safety.

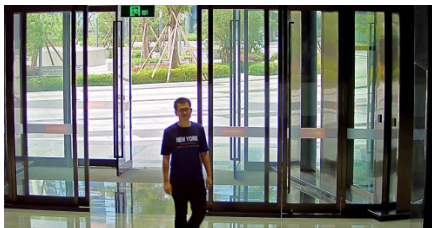
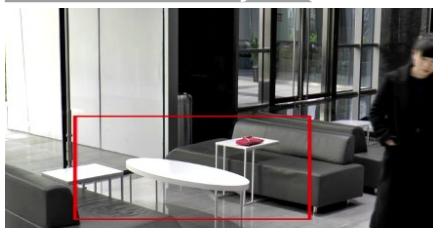
- **ATM Cameras:** HD video, discreet pinhole design, dual lens for different direction viewings.
- **ATM NVR:** Dedicated form factor, support transaction information overlay.
- **Cabin Camera:** Only one wide angle camera to cover all the in-cabin area.

*Note: Transaction Data Overlay With video for better customer dispute solving and enhance transaction safety.*



\* The integration protocols may vary based on exact ATM machine manufacturers and ATM models, CUSTOMIZATION PROCESS may be required. Please go to Hikvision local technical support team for more information.

## Entrance & Lobby



In a bank agency, the entrance and lobby areas are the most frequented locations that require high detailed facial images even in high lighting contrast environment.

- **Super WDR camera:**

Hikvision Lightfighter series cameras can reach up to 140dB Wide Dynamic Range for obtaining a crystal clear image quality even in high contrast sunshine environment

- **4K Ultra HD camera:**

From fixed box camera with dedicated wide angle lens to panoramic fisheye camera, Hikvision has a full range of 4K products to meet highest definition requirement.

- **Smart Detection:**

Hikvision Smart IP cameras have full smart feature-set such as intrusion detection, object left/removal detection etc. to better assist in-office security management

## Counter & Teller



High volumes of financial transactions each day – from signing documents to approving loans – may leave institutions vulnerable to customer misunderstandings or disputes.

- **Dual-lens Teller Camera:**

Hikvision's Monovu teller camera is specifically designed for applications where high definition and bilateral close-up imaging are required of individuals during financial transactions.

### MODE 1



### MODE 2 (PiP)



Modern-classic Design



Easy Double Views



On-board Storage

## Security Center



Storing critical video footage of daily operations in a bank's security center is a core component of a total CCTV system. It requires the utmost reliability and manageability for data protection and security operations.

- **Embedded NVR:**

Hikvision has the richest embedded network recorder product line – from 4 channels to 256 channels – for every level of need

- **Video Management Platform:**

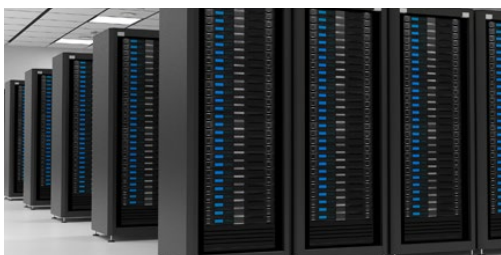
iVMS5200P Video Platform is the CCTV system core that manages, views, plays back, and controls all the daily operations among all devices

- **Network Storage Server:**

A must-have product line for total secure data storage

- **Monitor Display System:**

From standalone monitors to large TV walls, Hikvision has it all



Storage Server



Modularized design and hot plugging for easy maintenance



Double controller & power module for data safety



Supports CVR mode for better return on investment



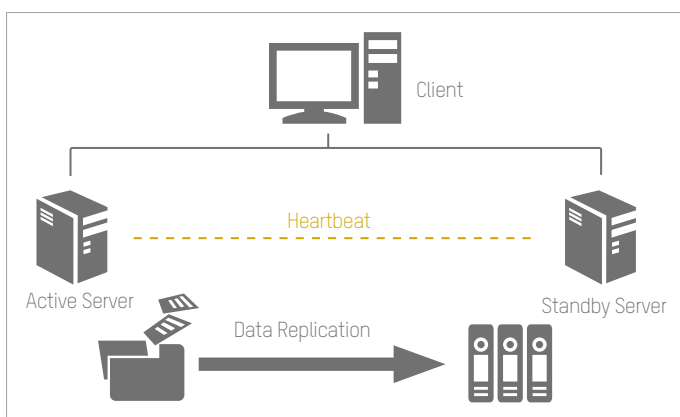
Decoder



Video Wall Controller



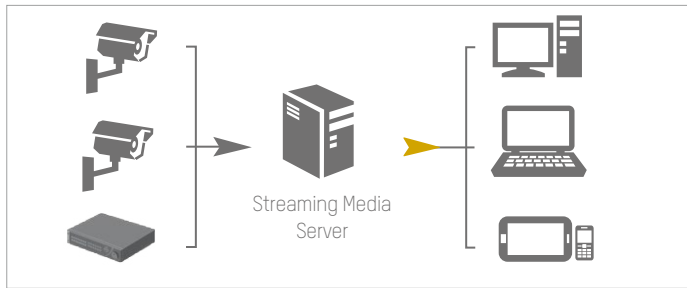
TV Wall



### Data Safety

#### Server Redundancy Design

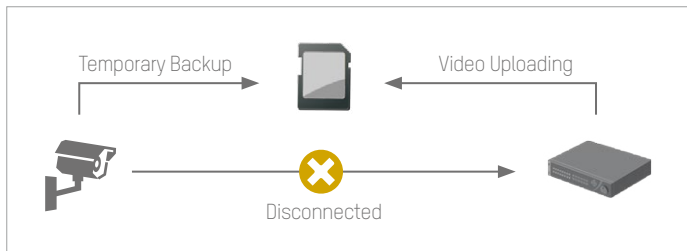
- Active & standby servers
- "Heartbeat" function automatically backs up users' information if one server is interrupted
- Ensures users' live view and playback in case of failover



## Transmission Optimization

### Streaming Media Server

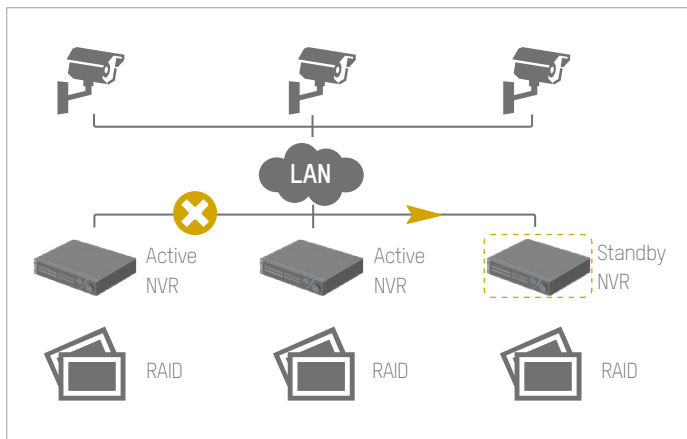
- Hikvision Streaming Media Server enable multiple users to live view or playback the same camera with only one channel bandwidth transmission;
- 1 Streaming Media Server supports up to 200 x 2Mbps video data streaming and up to 200 channels.



## Data Safety

### Auto Network Recovery (ANR)

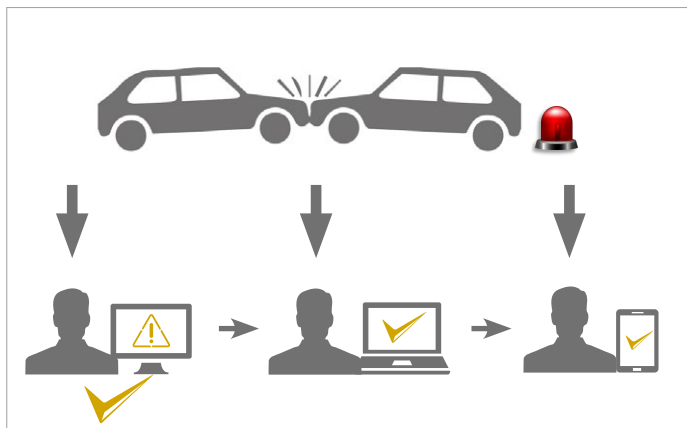
- Auto backup if network connection is interrupted
- Data moves from SD card to back-end device while network connection is restored
- We recommended using Hikvision brand Micro SD card for ANR storage



## Data Safety

### RAID & N+1 Failover

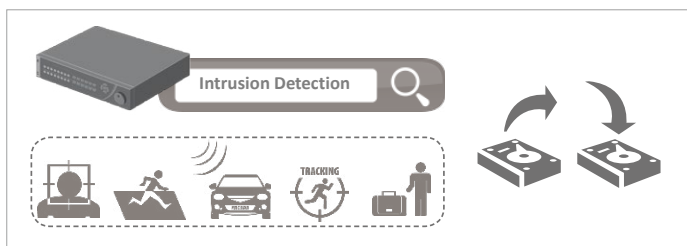
- **Single-spot storage backup:**  
Multi-RAID supported by embedded NVR and Storage Server
- **Multi-spot storage backup:**  
When any active NVR is out of service, the standby NVR can take over recording automatically



## Alarm Management

### Multi-users Notification

- Real-time alarm notifications sent to iVMS5200P's control clients
- Even mobile clients can receive notifications
- One-Check-All mechanism allows one user to handle the event and others to simply receive notification

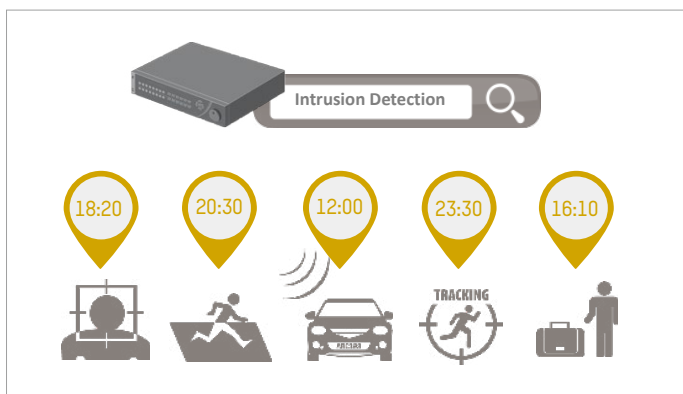


## Large Data Management

### Smart Backup

- Supports event footage backup
- Saves maximum storage space





## Large Data Management

### Smart Search

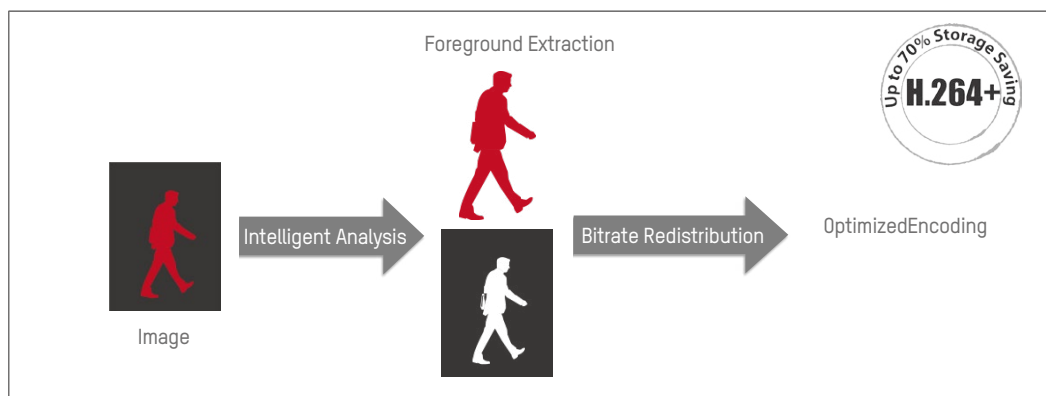


- Fully compatible with Hikvision Smart IP Cameras
- Easy and quick event search for snapshots and video recording
- Plays back the target event footage at standard speed and can fast-forward (up to 16x)
- Unrelated video can be skipped during playback

## HIGHLIGHTED TECHNOLOGY

### Smart Codec – H.264+ Optimized Compression

An efficient way to manage super high resolution video footage.



### Analytic + Compression

The moving target is extracted from the static background, using a different codec for each element.

- Background-based predictive smart encoding
- Enhanced noise suppression
- Optimized, long-term bitrate control



H.264 (25fps)

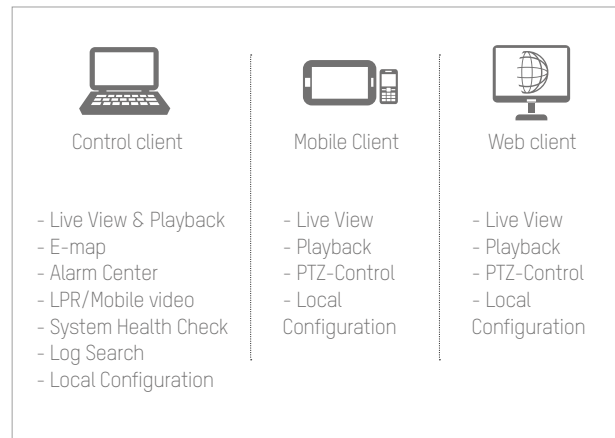
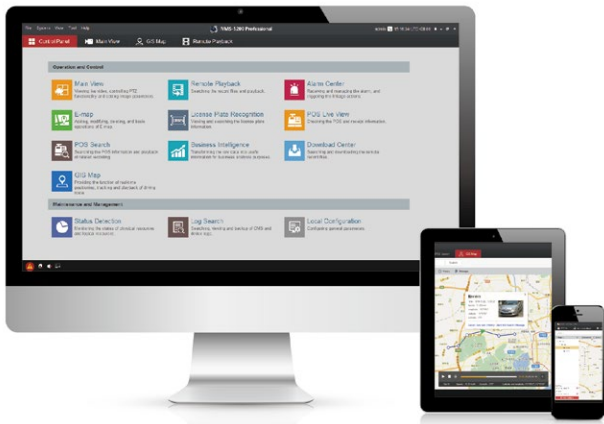


H.264+ (25fps)

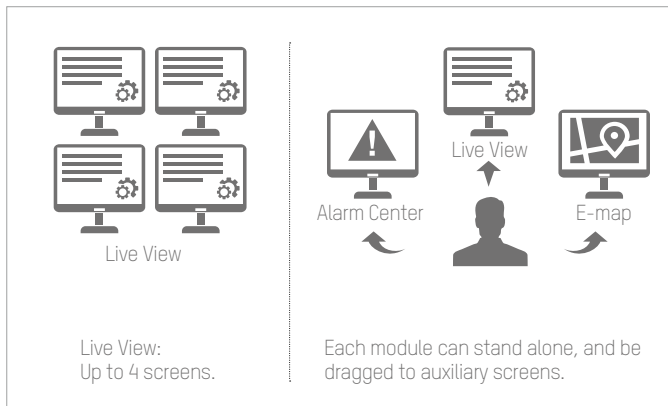
In a static nighttime environment, the H.264+ bitrate can achieve 50–60 Kbps – 10–20 times better than the standard H.264 codec. This not only saves bandwidth, but effectively reduces storage requirements.

- Improved encoding
- Improved transmission efficiency
- Improved data storage

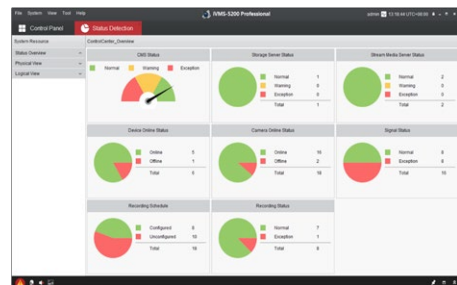
# iVMS-5200 PROFESSIONAL



## Multi-Screen Operation

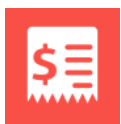


## System Status Detection



- CMS Status
- Storage Server Status
- Stream Media Server Status
- Device Online Status
- Camera Online Status
- Signal Status
- Recording Schedule
- Recording Status

## Add-on modules



### POS Module

- POS live view (Video and transaction receipts )
- Transaction information search
- Transaction video playback
- Event backup



### Business Intelligence Module

- Transaction Data Analysis
- People Counting Analysis
- Retail & Traffic Analysis



### Parking Lot & ANPR Module

- Automatic Number Plate Recognition
- No credential required for access & exit
- Black list & white list automatic filtering
- Entrance barrier linkage
- Vehicle information and entrance statistic report



### GIS Map Module

- Vehicle real-time tracking
- Vehicle exception alarming
- Instant communication with vehicle
- Vehicle routine report



## ■ Ziraat Bank, Turkey

A total of two thousand Hikvision Network DVRs were installed across every branch and ATM kiosk of Ziraat Bank throughout Turkey.

**"The sophisticated products, professional technical support, and speedy customization provided by Hikvision perfectly match what we expected, and we will continue to use Hikvision's reliable products in the second phase of the installation."** Necmi Cevirme, security department manager of Ziraat Bank.



## ■ Bank of India

Hikvision Network DVRs are used in more than 20 Janakalyan Sahakari Bank branch offices to acquire transaction details including ATM IDs, card numbers, and transaction times and dates, as well as to overlay the information onto video footage with user-defined fonts, color, and positioning.

**"After adopting Hikvision's DS-7004HI-S Network DVR to get high-quality surveillance 24/7, Janakalyan Sahakari Bank has now enhanced its security to provide a secured environment for customers, employees, and assets,"** said Vijay Kale, manager of Janakalyan Sahakari Bank Head office.



## ■ Janakalyan Sahakari Bank, Mumbai, India

Hikvision provides a hybrid security solution for over 4,000 Bank of India branches throughout the country. The high-quality, advanced technology Hikvision 4 Series Smart IP Cameras and 700TVL analog cameras secure the facilities.



## ■ VakifBank, Turkey

VakifBank's complete system fully utilizes DVR technology to maximize local-storage in branch offices, while Hikvision's iVMS-5200 Professional Video Management Platform was applied to remotely manage all video information from each one.



## ■ BMCE Bank, Morocco

Morocco's BMCE Bank applied Hikvision's hybrid DVR to allow the use of both analog and IP cameras in the bank's surveillance system, providing excellent performance today with existing analog cameras, and promises excellent performance tomorrow with future IP technology.

## PRODUCT SHOWCASE

### ATM Monitoring



**DS-2CD6412FWD**  
ATM Network Camera

- 1.3MP HD720p real-time video
- 120dB WDR
- Discreet pinhole lens (3.7mm/F2.3)
- 4mm fixed lens optional
- (for pinhole limited areas)
- Dual/single-lens optional
- 2m/8m lens cable optional (RJ12) for different installation locations.
- Support on-board storage up to 128GB
- Audio/Alarm IO interfaces
- Support PoE power supply



**DS-7600NI-V/VP**  
ATM Network Video Recorder

- Up to 5 Megapixels resolution recording for HD surveillance
- HDMI and VGA output at up to 1920×1080P resolution
- 4/8 PoE ports for Plug & Play
- Auto IP address allocation with Hikvision IP cameras
- Support Transaction Info. Overlay
- \* The protocols may vary based on exact ATM machine manufacturers and ATM models, CUSTOMIZATION PROCESS might be required.

NEW 2016Q1



**DS-2CD6W32FWD-IVS**  
Wide angle Camera

- 3 Megapixel high resolution
- 2048 x 1536 at 25/30fps real-time video
- 2mm/F2.4 panoramic lens
- Horizontal FoV: 135°
- 120dB WDR, 3D DNR
- Support up to 64GB on-board storage
- Built-in MIC & speaker
- Audio/Alarm IO
- DC12V, PoE power supply
- Up to 15m IR range
- IP66 weather-resistant protection
- Wall-mount bracket included

### Entrance & Lobby



**DS-2CD4125FWD-IZ**  
Super WDR Indoor Camera

**LIGHTFIGHTER**

- Up to 2 Megapixel high resolution
- Full HD1080p, up to 60fps
- Up to 30m IR
- Full Smart feature-set
- 140dB WDR with Triple Exposure
- 2.8-12mm Motorized VF lens
- Smart Auto Focus
- Audio/Alarm IO
- Support on-board storage, up to 128GB
- UP to 30m IR range
- IK10 vandal-proof housing
- DC12V, PoE power supply



**DS-2CD4085F-A**  
Wide Angle 4K  
Network Camera

- Up to 4096 x 2160 high resolution
- Digital WDR, 3D DNR
- Auto Back Focus
- Audio/Alarm IO
- Support on-board storage, up to 128GB
- Wide angle lens: HF3417D-12MPIR
- 3.4mm F1.7 aperture with IR correction
- DC12V & AC24V & PoE
- Intrusion Detection, Line Crossing Detection, Object Left/removal Detection, Region Entering/Leaving Detection etc.

### Counter & Teller

NEW 2016Q1



**DS-2CD6812D**  
MONOVU Dual Lens Camera

**MONOVU**

- 1.3MP resolution
- HD720p real-time video
- PIP (Picture in Picture)
- Independent lens adjustment
- Built-in Mic
- Built-in Wi-Fi optional (-W)
- Audio/Alarm IO (-S)
- Table/wall/ceiling mount

## Security Center



**DS-96128/256NI-F16/F24 (/H)**  
Embedded Super NVR

- Maximum 400/640Mbps bitrate Input
- Support 3rd party network cameras
- Up to 8MP resolution recording
- HDMI & VGA output (1920x1080p)
- Support RAID0, 1, 5, 10
- Support redundant power supply
- F16: 16x SATA; F24: 24x SATA
- 1x eSATA, 1x mini SAS, 3x USB 2.0
- /H: support up to 12-ch HDMI output & LCD touch screen



**DS-9632/64NI-I8**  
Embedded 4K NVR

- Maximum 320Mbps bitrate Input
- 200Mbps bitrate input (RAID enabled)
- Support 3rd party network cameras
- Up to 12MP resolution recording
- Support H.264/H.264+ /H.265 video format
- 2x HDMI & 2x VGA output (3840x2160)
- Support RAID0, 1, 5, 10
- Support redundant power supply
- Dual digital network interfaces
- 8x SATA, 1x eSATA, 2x USB2.0, 1x USB3.0
- 19-inch rack-mounted 2U chassis



**DS-A81016S**  
Network Storage System

- High performance 64 bit RISC processor
- Up to 16 HDD, 4TB maximum capacity for each
- Up to 180-ch 4CIF real-time recording
- iSCSI/NFS/CIFS/FTP/HTTP/AFP protocols
- Support RAID 0, 1, 3, 5, 10, 50
- Support HDD hot-swapping
- Dual Gigabit network interfaces
- Modularized design for easy maintenance
- Redundant power design for high reliability



**DS-A82024D**  
Network Storage System

- High performance & easy extensible hardware platform
- Double controller system design
- Automatic service takeover
- Disk detection, repairing and RAID optimization
- Low power consumption
- 4U chassis structure, support up to 24 HDDs and cascade extension



**DS-6401/04/08/12/16HDI-T**  
High Definition Decoder

- Up to 12MP/14fps resolution
- 1/4/6/8/9/16 division
- 1-ch DVI and 1-ch VGA signal input(Except DS-6401HDI-T)
- DS-6401 supports HDMI/VGA/BNC interfaces
- Other models support DVI/BNC interfaces (HDMI/VGA requires converter)
- PC signal to display on video wall
- Screen joint and display
- Cross-window video roaming
- Video fluency enhancement



**DS-C10S-11/22/41/E**  
TV Wall Controller

- Maximum 184-ch analog, or 92-ch TVI or 92-ch HDMI/DVI/VGA input
- Maximum 72-ch HDMI/DVI/VGA output
- up to 72pcs screen joint
- Built-in Matrix
- Support joint, division and display
- Base map
- Cross-window video roaming
- Support hot plug
- Redundant power supply

## PRODUCT SHOWCASE



DS-D2046NL/H -C  
DS-D2055NL/H -B  
Ultra Slim Bezel LCD

- 46" or 55" screen dimension
- -NL: 500cd/m<sup>2</sup> brightness
- -NH: 800cd/m<sup>2</sup> brightness
- 3.5mm physical seam
- Defog, low-light compensation
- Edge processing, true native image
- Dynamic self-adaption noise reduction
- Cross color suppression
- Signal input: HDMI, DVI, VGA, BNC, YPbPr
- Signal output: DVI, VGA, BNC
- Remote control: IR in, Address ID
- RS232 control



DS-1100KI  
Network Keyboard

- 7" TFT touch screen with 800×480 resolution
- Live view and video playback
- Video wall control
- 4-axis joystick
- Macro command operation
- Up to 255 analog domes by RS-485 connection
- Compatible with Hikvision IP cameras, DVR/NVR, decoder, matrix



iVMS-5200 Professional  
Video Management Platform

- Centralized device & user management
- Maximum connected devices per system: 1024
- Maximum 16 control client
- Maximum 16 web client
- Maximum 24 mobile client
- Support 3rd party integration via ONVIF & SDK
- Additional add-on modules:
- LPR: license plate recognition
- Transaction: POS integration + CCTV footage
- Business Intelligence: people counting, heat mapping and retail traffic analytic
- GIS: Vehicle tracking, GEO fencing



DS-D5032FL 32-inch  
DS-D5022FL 22-inch  
LCD Monitor

- 8bit/10bit 2-ch LVDS(1920\*1080) Full HD1080P resolution
- Adopt 3D digital comb filter
- True color OSD and user-friendly operation menu
- Adopt mstar ACE-5 auto color and image enhancement engine, to improve image contrast, detail
- 1 channel HDMI 1.3 input interface support HDCP 1.2
- Support video output
- Support audio I/O



## END-TO-END SECURITY SOLUTIONS FOR BANKING INSTITUTIONS SMART BANKING SOLUTION

### BANKING



Distributed by



## HIKVISION

### Headquarters

No.555 Qianmo Road, Binjiang District,  
Hangzhou 310051, China  
T +86-571-8807-5998  
overseasbusiness@hikvision.com

Hikvision Poland  
T +48-22-460-01-50  
poland@hikvision.com

Hikvision USA  
T +1-909-895-0400  
sales.usa@hikvision.com

Hikvision India  
T +91-22-28469900  
sales@pramahikvision.com

Hikvision UK  
T +44-1628-9021-4  
support.uk@hikvision.com

Hikvision Europe  
T +31-23-5542770  
saleseuro@hikvision.com

Hikvision Italy  
T +39-0438-6902  
info.it@hikvision.com

Hikvision Singapore  
T +65-6684-4718  
sg@hikvision.com

Hikvision Middle East  
T +971-4-8816086  
salesme@hikvision.com

Hikvision France  
T +33(0)1-85-330-444  
info.fr@hikvision.com

Hikvision Oceania  
T +61-2-8599-4233  
salesau@hikvision.com

Hikvision Russia  
T +7-495-669-67-99  
saleru@hikvision.com

Hikvision Spain  
T +34-91-737-16-55  
info.es@hikvision.com

Hikvision Hong Kong  
T +852-2151-1761